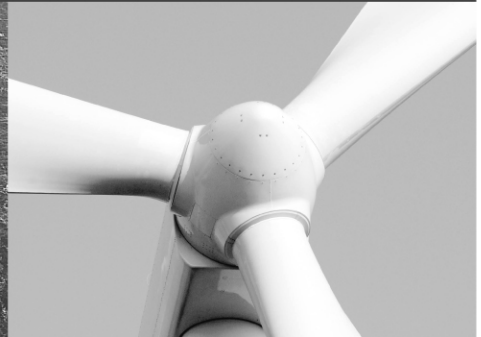




-power in control



APPLICATION NOTES



Translations

- Reading, editing and writing of translations from within USW 3



DEIF A/S · Frisenborgvej 33 · DK-7800 Skive
Tel.: +45 9614 9614 · Fax: +45 9614 9615
info@deif.com · www.deif.com

Document no.: 4189340630D

This document covers the following products:

| | |
|-----------|---------------------------------|
| AGC 200 | from SW version 3.5x.x or later |
| AGC-3 | from SW version 3.30.0 or later |
| AGC-4 | from SW version 4.0x.x |
| APU 200 | from SW version 3.53.x |
| GC-1F | from SW version 1.00.0 |
| GPC | from SW version 3.0x.x |
| GPU | from SW version 3.0x.x |
| GPU-3 REC | from SW version 3.0x.x |
| PPM | from SW version 3.0x.x |
| PPU | from SW version 3.0x.x |

Utility software: USW version 3.30.0 and later.

Table of contents

- 1. WARNINGS AND LEGAL INFORMATION 4**
 - LEGAL INFORMATION AND RESPONSIBILITY 4
 - ELECTROSTATIC DISCHARGE AWARENESS 4
 - SAFETY ISSUES 4
 - DEFINITIONS 4
- 2. INTRODUCTION..... 5**
- 3. HOW TO PERFORM THE TRANSLATION OF STRINGS IN A DEVICE 6**
 - READING OF TRANSLATIONS FROM DEVICE 6
 - EDITING OF TRANSLATIONS 8
 - WRITING OF TRANSLATIONS 14
- 4. WRITING TRANSLATIONS USING THE N-OPTION..... 16**

1. Warnings and legal information

This chapter includes important information about general legal issues relevant in the handling of DEIF products. Furthermore, some overall safety precautions will be introduced and recommended. Finally, the highlighted notes and warnings, which will be used throughout this document, are presented.

Legal information and responsibility

DEIF takes no responsibility for installation or operation of the generator set. If there is any doubt about how to install or operate the generator set controlled by the unit, the company responsible for the installation or the operation of the set must be contacted.

The units are not to be opened by unauthorised personnel. If opened anyway, the warranty will be lost.

Electrostatic discharge awareness

Sufficient care must be taken to protect the terminals against static discharges during the installation. Once the unit is installed and connected, these precautions are no longer necessary.

Safety issues

Installing the unit implies work with dangerous currents and voltages. Therefore, the installation should only be carried out by authorised personnel who understand the risks involved in working with live electrical equipment.



Be aware of the hazardous live currents and voltages. Do not touch any AC measurement inputs as this could lead to injury or death.

Definitions

Throughout this document a number of notes and warnings will be presented. To ensure that these are noticed, they will be highlighted in order to separate them from the general text.

Notes



The notes provide general information which will be helpful for the reader to bear in mind.

Warnings



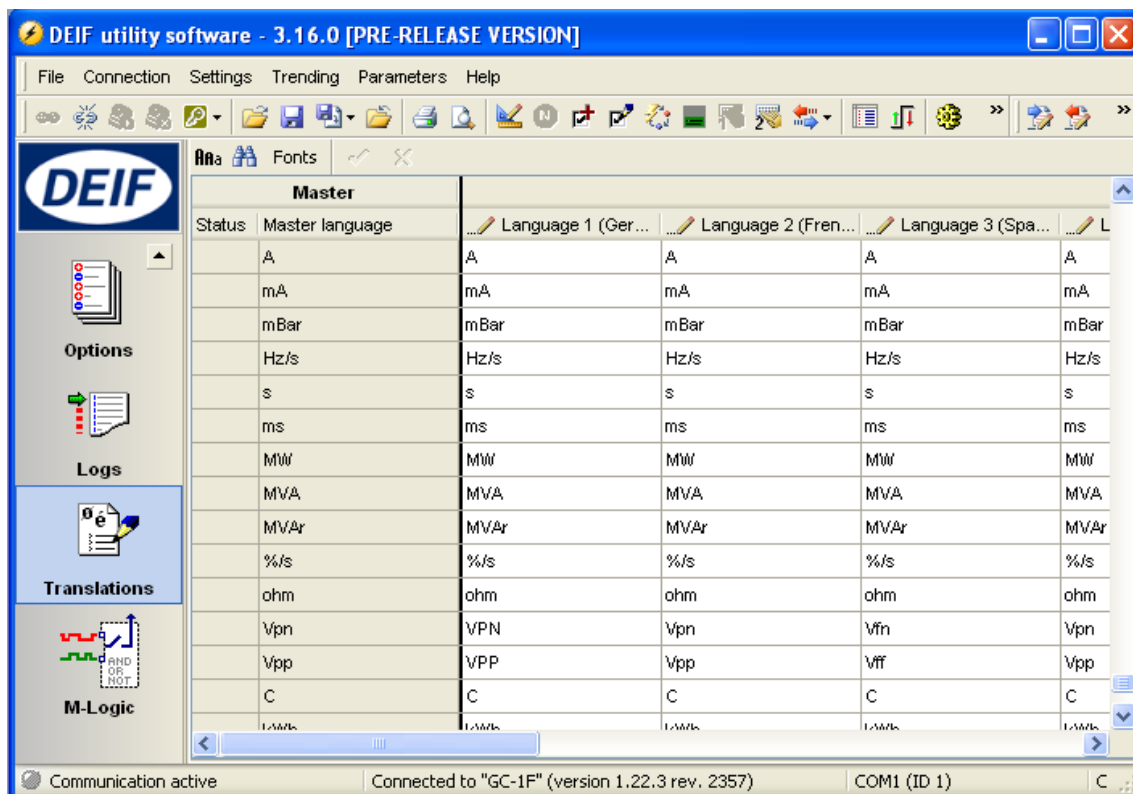
The warnings indicate a potentially dangerous situation which could result in death, personal injury or damaged equipment, if certain guidelines are not followed.

2. Introduction

Many of the advanced Engine & Genset controllers from DEIF allow the user to translate the strings shown in the display of the device. In order to translate these strings, the PC utility software (hereinafter referred to as USW) has to be used. The USW is used for the following:

- Reading the translation strings from a connected device
- Editing of the strings
- Writing of the translations.

In the translation page of the USW, the languages are shown in vertical columns. Each row corresponds to a translation of a given master string. The master strings compose a so-called master language, and the master strings are the default English strings shown in the left column. The status column is filled in if synchronisation (see later) is performed.

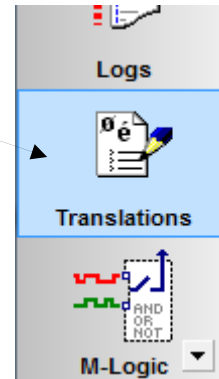


Translations can, as the only thing, be used across device types. So the translations stored in a USW file originating from one type of device (e.g. AGC-3) can be stored in another device type (e.g. PPM-3). Only those strings, for which the master strings are identical, will be saved in the device. Thus, when using translation across device types, there will most likely be a large number of strings for which there is no match and therefore no translation. In this situation, the master strings are copied to the fields not translated.

3. How to perform the translation of strings in a device

Reading of translations from device

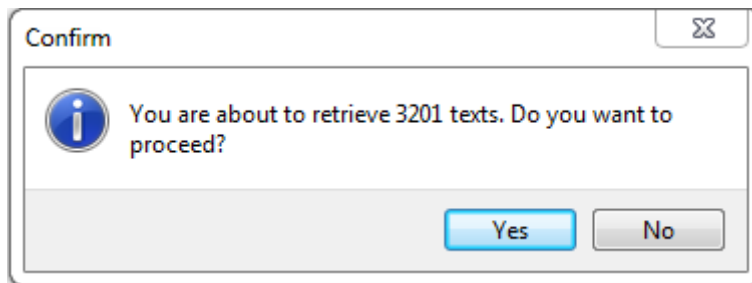
Open the USW, connect to device and go to the translation page.



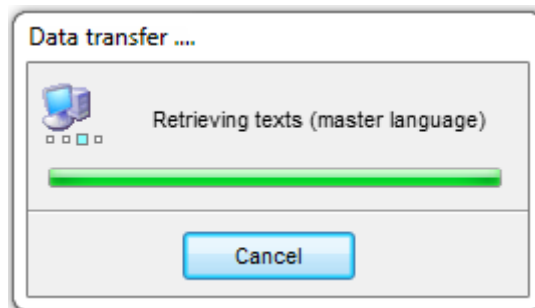
Press the read button in the menu bar.



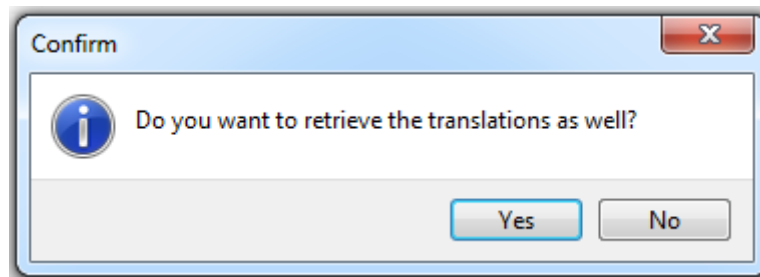
As the reading process can be time-consuming, the user is asked whether he wants to proceed.



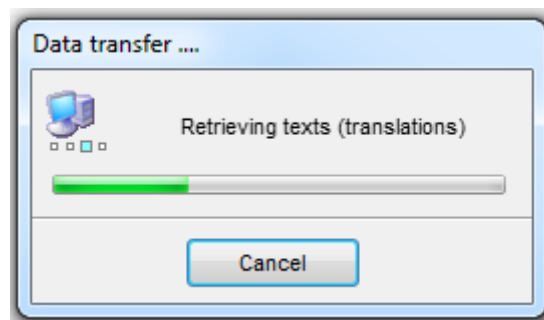
If you press "Yes", the master will be read from the device. During the reading process, a pop-up with a progress bar will be shown.



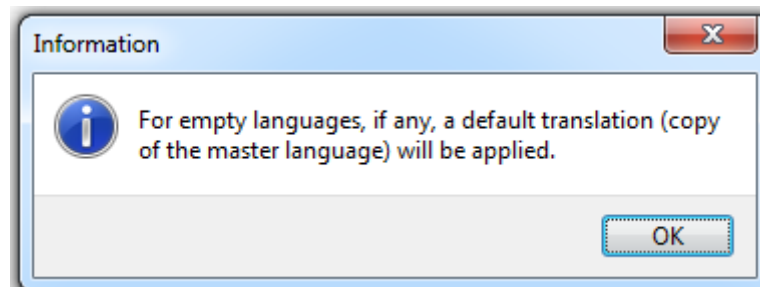
Next, the user will be asked whether the translated strings should be loaded from the device. If “No” is chosen, the user will not retrieve the translations, but instead the English master texts will be copied to all language columns.



If “Yes” is chosen, the reading process of all languages in the device will take place.



Some of the translation columns in the device might be empty. These columns will be filled with the master strings in the translation page. The user is informed about this in the following pop-up:



Editing of translations

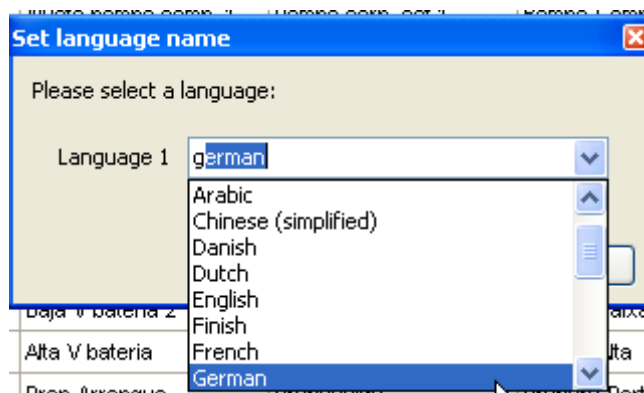
Inside the translation page, there are a number of different features. The user can, for example, assign a name to a given language column, translate strings, copy languages from one column to another, and import languages from different USW files. The different features are described in the following.

1. Set the name of the language

Click the pencil symbol



and specify the language:



If the desired language is not there, the user can write a user-defined string. Now, the language name (or a fraction that the column width allows) is shown in the header of the column.

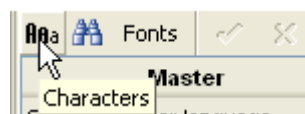


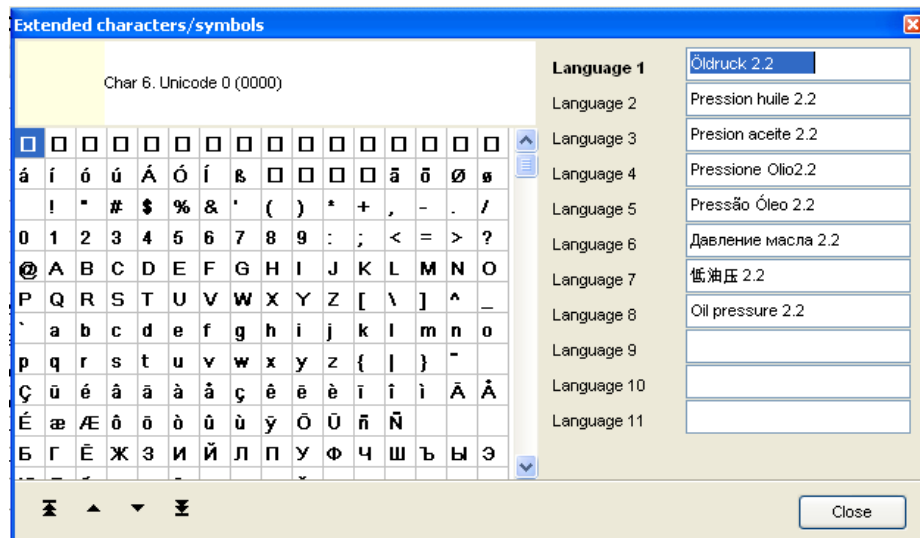
The name of the language is not saved in the device. It can only be saved in a USW file. Therefore: remember to save the translations to file.

2. Translate the strings

There are two ways to edit a given string:

- Choose the string to be modified and type characters using the keyboard.
- Choose the string to be modified and press the icon for the "Extended Character" pop-up.



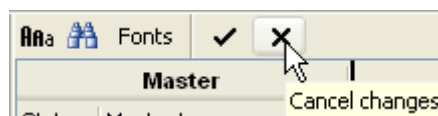


The string can be composed by clicking the characters in the left side of this pop-up. This is a way to enter characters not shown on the keyboard of the PC.

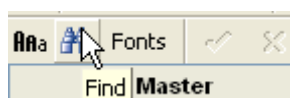
Using the keyboard, the user might enter characters that the device does not support. The number of characters supported in the DEIF devices is given in the following table:

| Product series | Characters supported | Comments |
|--|----------------------|---|
| AGC-3 AGC-4 GPC-3 GPU-3 PPM-3 PPU-3 | Approx. 200 | The exact charset supported, depends on the type of Display Unit. There are two types of Display Units: Western and Cyrillic. |
| GC-1F | Approx. 200 | |
| AGC 200 | Any | Any Unicode character is supported |

If the user wants to cancel the last change performed directly in the language columns, he can press the cancel button (this will only undo the changes to the active field).



In order to search for a given string in the translation page, the user first needs to click inside the language column in which to look for the string and then press the find symbol.

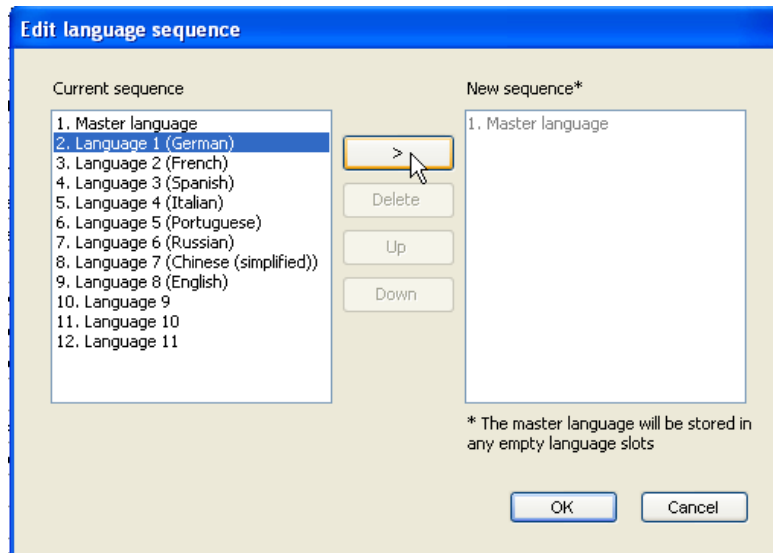


3. Copy languages between columns and edit the sequence of languages

If the “Edit language sequence” button in the menu bar is pressed,



a pop-up will be shown where the user can interchange the position of the languages.



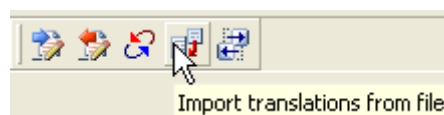
The same language from the left side can be copied to multiple positions in the right side. When closing this pop-up, the languages are interchanged/overwritten according to the sequence specified in the right side (the “New sequence” window).



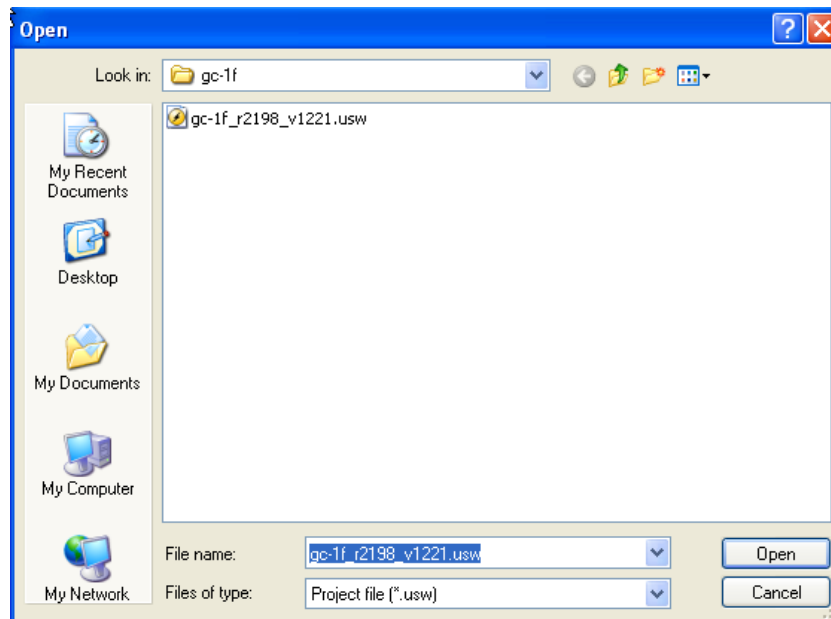
After pressing OK in the Edit language sequence, changes cannot be cancelled. Therefore any overwritten languages will be lost if no backup has been saved.

4. Import translations from a USW file

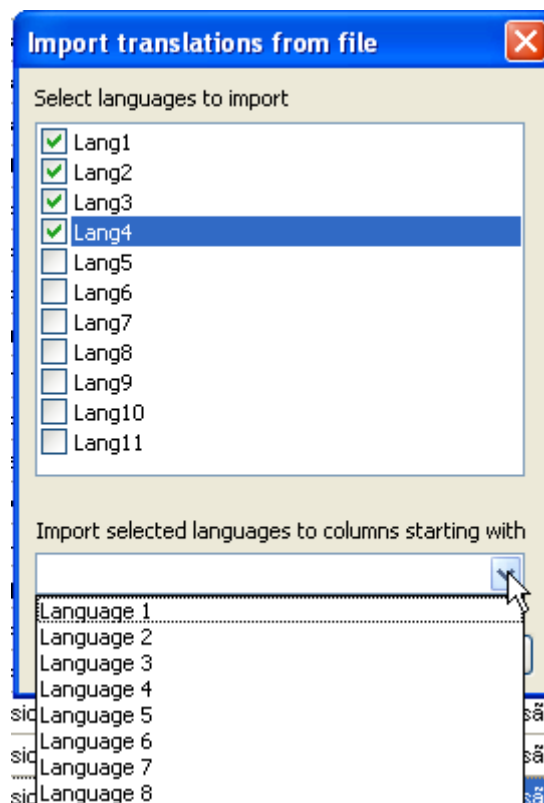
By pressing the “Import translations from file” icon in the menu bar, the user can import languages from a USW file.



The USW file is selected in a pop-up.

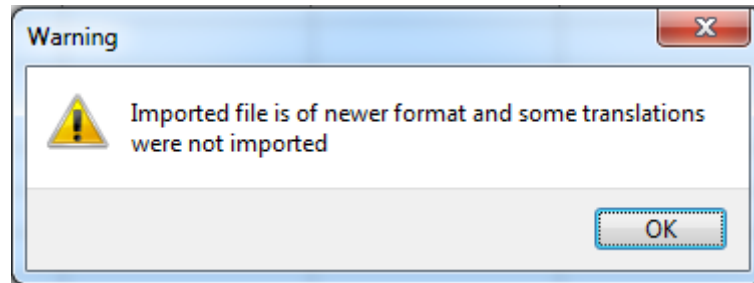


Subsequently, the user must select which languages to import from the file and in which language columns those languages should be stored.



Note that the more languages chosen for import, the shorter the list of columns, in which they can be stored (the lower dropdown in the screenshot above). If, for example, the user chooses 4 languages, these languages can, at maximum, start at language column 8 (filing column 8, 9, 10 and 11).

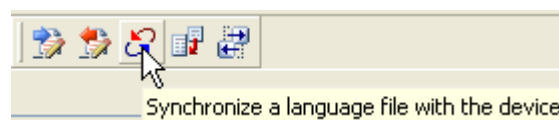
If the list of master strings is different in the file about to be imported, the following warning is shown to the user. This warning tells the user that some of the master strings found in the file are not present in the list of master strings already shown in the translation page. In order to avoid this, the user can start by loading the translation either from the device or from a USW file originating from a device with a firmware version similar to that found in the connected device. If some master strings are missing in the file when compared to the master strings in the connected device, the master string will be used.



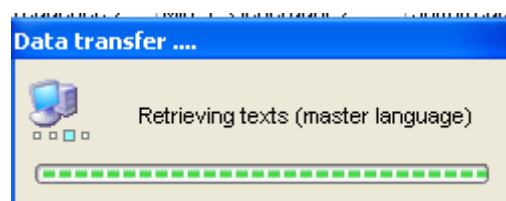
If the user wants to combine translations originating from different firmware versions of the device type, start by retrieving the translations from the device. In this way, the “target” master string list will be shown in the translation page. Subsequent retrieval of languages from different files will adjust to the master strings already loaded.

5. Synchronise languages




By pressing the “Synchronise a language file with the device” button, the master strings shown in the column most to the left in the translation page is synchronised with the master strings in the device. The purpose of the synchronise feature is to investigate whether there are master strings in the device, which are not present in the master language column in the translation page.



First, the master strings are retrieved from the connected device.



If a given master string in the device is not present among the master strings in the translation page, a red symbol is shown to the left of the master string. If a given master string is both in the device and in the language columns, a “correct” symbol is shown.

| Master | |
|--|----------------------|
| Status | Master language |
|  Translated | Remote comm. BTB Off |
|  Not translated | Remote comm. BTB On |
|  Not translated | Start attempts |

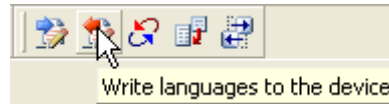
The different combinations are summarised in the following table:

| Master string in translation page | Master string in device | Result |
|-----------------------------------|-------------------------|---|
| Yes | Yes | Correct symbol is shown |
| Yes | No | The row with the master string is removed from the translation page |
| No | Yes | Red symbol is shown |
| No | No | Not relevant |

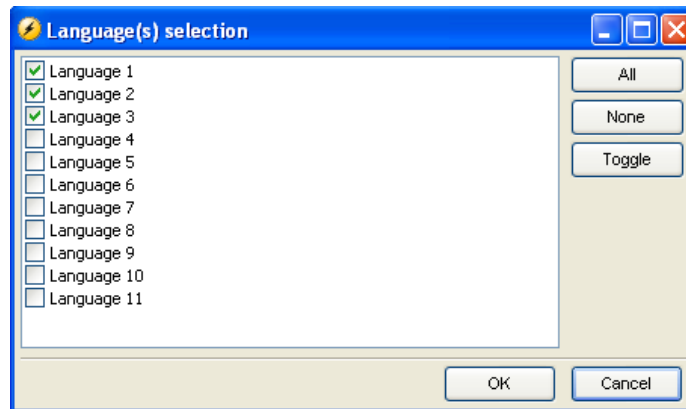
The synchronisation process takes place automatically when a USW file originating from one firmware version is saved to a device with another firmware version. This is because in this case, the number of strings in the device might have changed and synchronisation is therefore needed.

Writing of translations

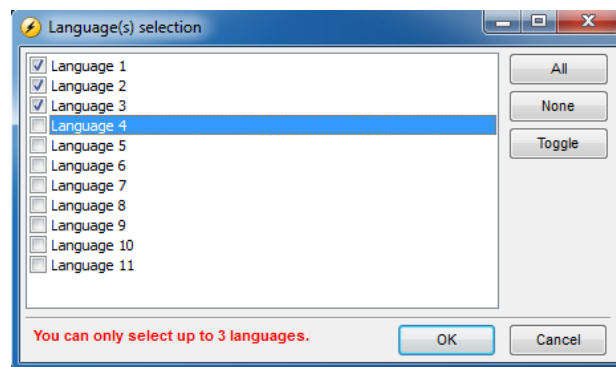
Once the editing of the language columns is done, the writing of translations to the device must be performed. The number of languages that can be written depend on the device connected. For example, the GC-1F can store 3 languages whereas the AGC-3 and AGC-4 can store 11. To write the languages to the device, press the write icon in the menu bar.



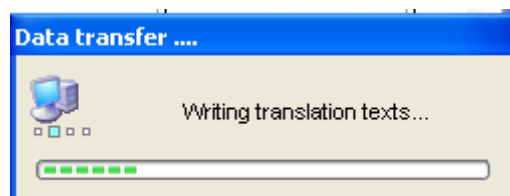
Then the user must select the languages that should be written to the device.



Only the number of languages, that the device can store, can be selected in the language selection pop-up. The user is stopped in choosing too many languages as shown below (in the screenshot below, the USW is connected to a GC-1F).



Then, after pressing OK, the writing takes place.



In order to ensure that the translations will apply in the device, some final steps must be performed. These steps depend on the type of device as indicated in the table below.

| Product series | How to select language | Comments |
|--|--|---|
| AGC-3 AGC-4 GPC-3 GPU-3 PPM-3 PPU-3 | Go to menu 6080 and choose the language number. | If the user want to specify the language to be used in the parameters page of the USW (rather than directly on the device) the parameters must be reloaded before the possible values at channel 6080 are available. |
| GC-1F | Go to channel 6080 in the parameters page of the USW and choose the language number. | After writing translations to the device, remember to reload the parameters before the new languages are available. |
| AGC 200 | Go to menu 6080 and choose the language number. Afterwards a reboot is required. | If the user wants to specify the language to be used in the parameters page of the USW (rather than directly on the device) the parameters must be reloaded before the possible values at channel 6080 are available. |

Finally, reboot the USW so the alarms strings are given according to the chosen language.

4. Writing translations using the option N

When writing translations using the TCP/IP connection facilitated by the option N card in the AGC-3, GPC-3, GPU-3, PPM-3, PPU-3 products, it is worth knowing that the device needs to be rebooted.

Apart from the reboot mentioned above, there is no difference in writing the translations using USB or TCP/IP.

DEIF reserves the right to change any of the contents of this document without prior notice.