



-power in control



## APPLICATION NOTES



### Update of system components in AGI 300 series

- Main OS
- Config OS
- Bootloader



DEIF A/S · Frisenborgvej 33 · DK-7800 Skive  
Tel.: +45 9614 9614 · Fax: +45 9614 9615  
info@deif.com · www.deif.com

Document no.: 4189340925A  
SW version:

## **1. Updating system components in AGI 300 series**

1.1. Introduction.....	3
1.2. System settings tool.....	3
1.3. Update of the system components via USB/SD flash drive.....	5
1.3.1. Upgrade steps for AGI 304, 307, 307G .....	5
1.3.2. Upgrade steps for AGI 315 and 315G .....	6
1.3.3. AGI Runtime installation .....	8
1.3.4. Disclaimer.....	8

# 1. Updating system components in AGI 300 series

## 1.1 Introduction

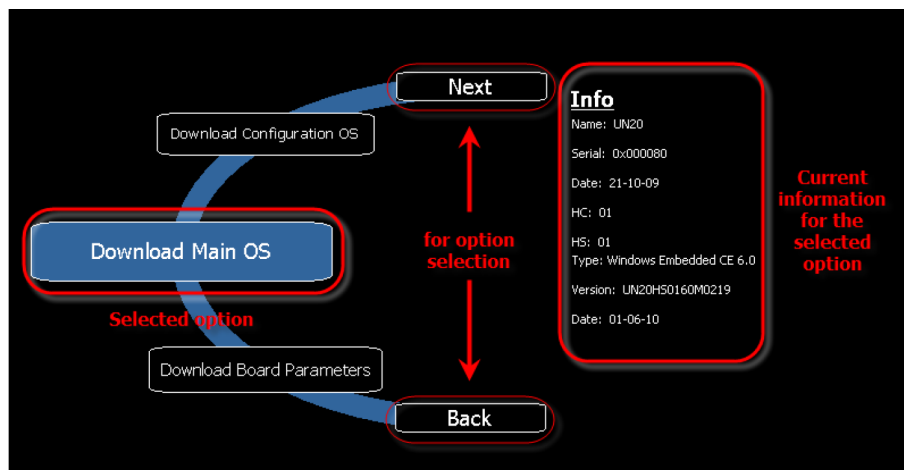
AGI 300 series products offer powerful tools for a complete upgrade of the system components. Upgrade can be done using USB/SD flash drives that include the new software modules and running on the device and the procedure described in details in this document.

The update tool on the panel also provides the user with detailed information on the components actually running in the system.

## 1.2 System settings tool

The system settings tool comes in the shape of a rotating menu with navigation buttons at top and bottom to scroll between the available options.

The tool is showed in the image below.



On the left side, the components and functions are highlighted and, per each of them, the right side ("info" pane) shows the information about the current version, when applicable. The image shows, as an example, on the right, the information reported when Download Main OS command is selected.

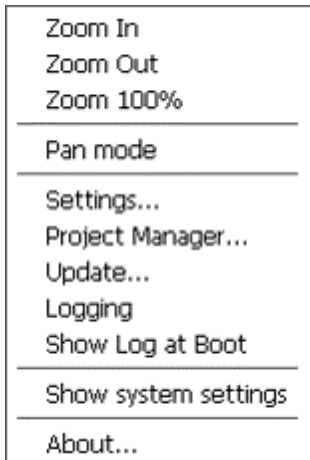
System settings has two operating modes: User Mode and System Mode.

The main difference between them is the "state" of the panel:

- User Mode can be accessed when AGI runtime is running
- System Mode can be accessed through a special procedure also when runtime is not running, or when panel is facing a software failure

To access system settings tool in User Mode, use the below explained procedure:

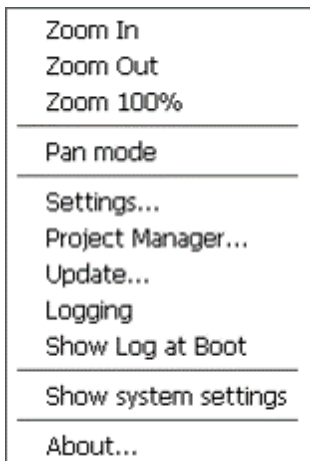
1. Press the screen for 2 seconds to enter context menu.



2. Select "Show system settings".
3. You are now in the system settings tool in User Mode.

To access system settings tool in System Mode, use one the below explained procedure:

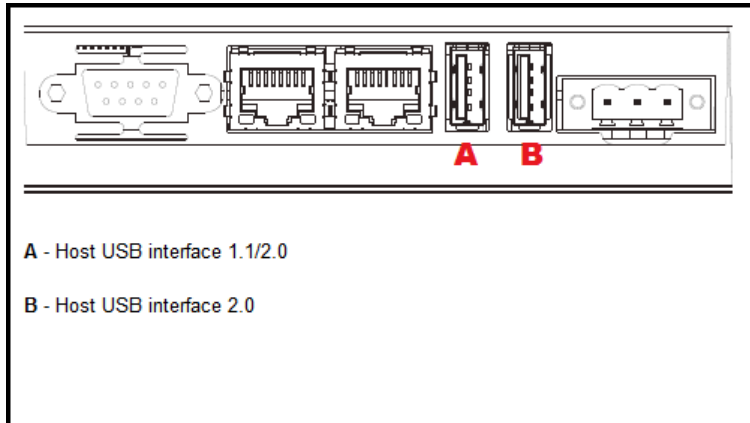
1. Press the screen for 2 seconds to enter context menu.



2. Select "Show system settings".
3. Scroll until you find "Restart" and select "Configuration OS" when asked.
4. The AGI will now reboot into the system settings tool in System Mode.



**The navigation in the system settings tool in System Mode on AGI 315 Glass panel requires use of an external mouse connected to USB port A (see the image below).**



## 1.3 Update of the system components via USB/SD flash drive

Files for upgrade are available on [www.deif.com](http://www.deif.com).

Upgrade steps described below show the procedure using a USB flash drive that is recognised from panel as "USBMemory" drive.

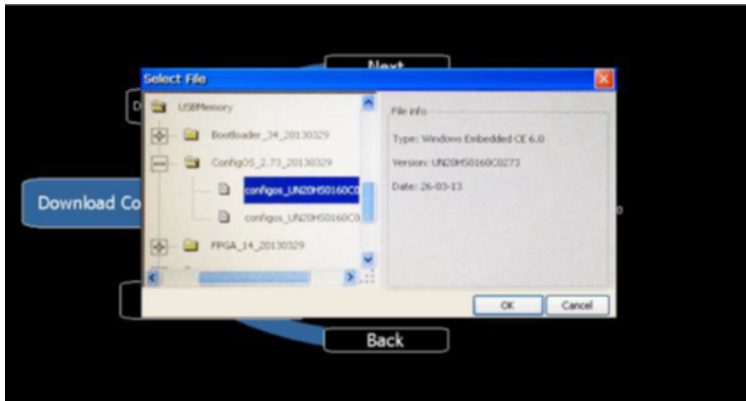
It is possible, as an alternative, to use an SD card that is recognised from panel as "Storage Card" drive.

### 1.3.1 Upgrade steps for AGI 304, 307, 307G

These are steps to follow:


- 1 Copy all files provided onto a USB flash drive and plug it into one of the USB ports on the panel.
- 2 Start the panel in the system settings tool in System Mode following the procedure explained in the previous section.

- 3 Navigate the menu and locate the "Download Configuration OS" item, then press it. The file browser will then appear. Select the "configos\_UN31HSXX60C0xxx.bin" file from the USB flash drive. Then confirm and proceed with the upgrade.  
See picture below.




Once the upgrade process has been completed, restart the panel and activate the system settings tool in System Mode again as explained in the previous section.

- 4 This step is optional unless it is required by DEIF technical support. Navigate the menu and locate the "Format Flash" item to format the panel flash memory.

** The system may appear stuck for a while. Please make sure to not power-off the panel during this operation.**

Wait for the format process to be completed. When the format is completed, the format window is automatically closed and the menu can be operated again.

- 5 Navigate the menu and locate the "Download Main OS" item, press it and, when the file browser appears, select the "mainos\_UN31HSXX60M0xxx.bin" file from the USB flash drive. Wait for the upgrade to be completed.
- 6 Navigate the menu and locate the "Download Bootloader" item, press it and, when the file browser appears, select the "uboot\_UN31HSxx0xx.bin" file from the USB flash drive. Wait for the upgrade to be completed.

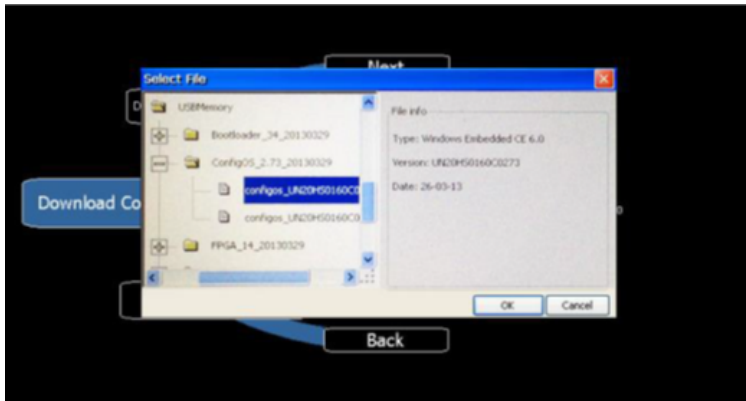
** When all the upgrades are completed, just power-cycle the unit to return to normal operation. Power cycle is required only ONCE after all the components have been updated.**

### 1.3.2 Upgrade steps for AGI 315 and 315G

These are steps to follow:

- 1 Copy all files provided in a USB flash drive and plug it into one of the USB ports on the panel.
- 2 Start the panel in the system settings tool in System Mode following one of the procedures explained in the previous section.

- 3 Navigate the menu and locate the "Download Configuration OS" item, then press it. The file browser will then appear. Select the "configos\_UN30HSXX60M0xxx.bin" file from the USB flash drive. Then confirm and proceed with the upgrade.  
See picture below.



Once the upgrade process has been completed, restart the panel and activate the system settings tool in System Mode again as explained in the previous section.

- 4 This step is optional unless it is required by DEIF technical support. Navigate the menu and locate the "Format Flash" item to format the panel flash memory.


** The system may appear stuck for a while. Please make sure to not power-off the panel during this operation.**

Wait for the format process to be completed. When the format is completed, the format window is automatically closed and the menu can be operated again.

- 5 Navigate the menu and locate the "Download Main OS" item, press it and, when the file browser appears, select the "mainos\_UN30HSXX60M0xxx.bin" file from the USB flash drive. Wait for the upgrade to be completed.
- 6 Navigate the menu and locate the "Download Bootloader" item, press it and, when the file browser appears, select the "uboot\_UN30HSXX60xxx.bin" file from the USB flash drive. Wait for the upgrade to be completed.
- 7 This step is optional, proceed only if FPGA file is provided.  
Navigate the menu and locate the "Download Main FPGA" item, press it and, when the file browser appears, select the "h148xbcxxrxx.bin" file from the USB flash drive.  
Wait for the upgrade to be completed.
- 8 This step is optional, proceed only if FPGA file is provided.  
Navigate the menu and locate the "Download Safe FPGA" item, press it and, when the file browser appears, select the "h148xbcxxrxx.bin" file from the USB flash drive.  
Wait for the upgrade to be completed.
- 9 This step is optional, proceed only if system supervisor file is provided.

** System supervisor component can be upgraded only if actual version on panel is v4.13 or above. Version v4.08, v4.09, v4.10 and v4.11 must not be updated, they do not support automatic update from system settings.**

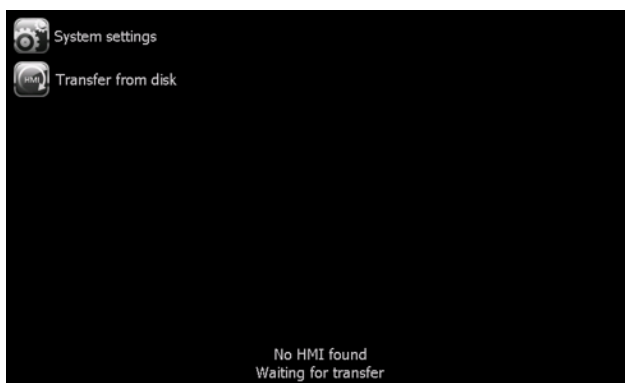
Navigate the menu and locate the "Download System Supervisor" item, press it and, when the file browser appears, select the "packaged\_GekkoZigBee\_v4.xx.bin" file from the USB flash drive.  
Wait for the upgrade to be completed, the panel should now restart automatically; if not, restart the panel manually.

 **When all the upgrades are completed, just power-cycle the unit to return to normal operation. Power cycle is required only ONCE after all the components have been updated.**

### 1.3.3 AGI Runtime installation

If the flash format operation, described at step 4 in previous section, has been executed, the panel now requires the installation of the AGI runtime.

When no runtime is installed, the panel starts with Runtime Loader; please see the Loader screen in the picture below:



In this case, the Runtime will be automatically installed into the panel from AGI Creator at the first project download.

It is also possible to install the Runtime using a USB flash drive. To create the installing package, you need to select the Update Package option from the Run > Manage Target menu of AGI Creator.

Once the package on the USB flash drive has been created, it is possible to install it on the panel by pressing the Transfer from disk button.

For more information regarding the installation via USB flash drive, we refer to AGI Creator Help.

### 1.3.4 Disclaimer

DEIF A/S reserves the right to change any of the contents of this document without prior notice.