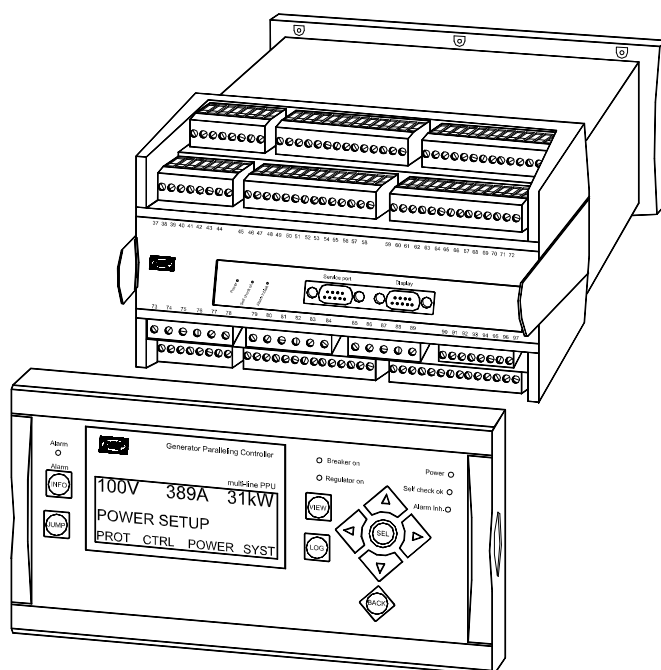


Description of options

Option H5 Serial communication (CAN bus) Multi-line 2 – version 2

4189340359E
SW version 2.4X.X



- *Description of option*
- *Functional description*
- *Parameter list*
- *Modbus communication*

CE

Table of contents

1. WARNINGS AND LEGAL INFORMATION.....	3
LEGAL INFORMATION AND RESPONSIBILITY	3
ELECTROSTATIC DISCHARGE AWARENESS	3
SAFETY ISSUES.....	3
DEFINITIONS	3
2. DESCRIPTION OF OPTION	4
H5 OPTION.....	4
TERMINAL DESCRIPTION	4
WIRINGS.....	5
3. FUNCTIONAL DESCRIPTION.....	6
ENGINE TYPES	6
ENGINE TYPE SELECTION.....	6
COMMUNICATION SYSTEM.....	7
EIC UNIT.....	7
ALARM FUNCTIONS	7
DISPLAYED VALUES	9
MODBUS COMMUNICATION	10
4. PARAMETER LIST	11
5. MODBUS COMMUNICATION	13

This manual is valid for standard multi-line 2 GPU/GPC/PPU units with firmware version 2.40.0 or later.

1. Warnings and legal information

Legal information and responsibility

DEIF takes no responsibility for installation or operation of the generator set. If there is any doubt about how to install or operate the generator set controlled by the unit, the company responsible for the installation or the operation of the set must be contacted.

The units are not to be opened by unauthorised personnel. If opened anyway, the warranty will be lost.

Electrostatic discharge awareness

Sufficient care must be taken to protect the terminals against static discharges during the installation. Once the unit is installed and connected, these precautions are no longer necessary.

Safety issues

Installing the unit implies work with dangerous currents and voltages. Therefore, the installation should only be carried out by authorised personnel who understand the risks involved in working with live electrical equipment.



Be aware of the hazardous live currents and voltages. Do not touch any AC measurement inputs as this could lead to injury or death.

Definitions

Throughout this document a number of notes and warnings will be presented. To ensure that these are noticed, they will be highlighted in order to separate them from the general text.

Notes



The notes provide general information which will be helpful for the reader to bear in mind.

Warning



The warnings indicate a potentially dangerous situation which could result in death, personal injury or damaged equipment, if certain guidelines are not followed.

2. Description of option

H5 option

Option H5 is a hardware option, and therefore a separate PCB is installed in slot #8 in addition to the standard-installed hardware.

Function	ANSI no.
Serial engine communication	-

Terminal description

CAN bus communication

The PCB for the engine interface communication module is placed in slot #8.

Term.	Function	Description
133	Can-H	CAN bus card option H5, Engine Interface Communication
132	Ground	
131	Can-L	
130	Can-H	
129	Ground	
128	Can-L	
127	Not used	
126	Not used	



**Terminals 133 and 130 are internally connected.
Terminals 131 and 128 are internally connected.**

The Can-H and Can-L lines must be connected to the proper Can-H and Can-L terminals on the engine communication module.



Please refer to the Installation Instructions of the specific type.

Modbus communication

The PCB for the Modbus card is placed in slot #2 if the controller unit is equipped with option H2 (Modbus).

Term.	Function	Description
29	DATA + (A)	Modbus RTU/ASCII, RS485
30	GND	
31	DATA - (B)	
32	Not used	
33	DATA + (A)	
34	Not used	
35	DATA - (B)	
36	Not used	



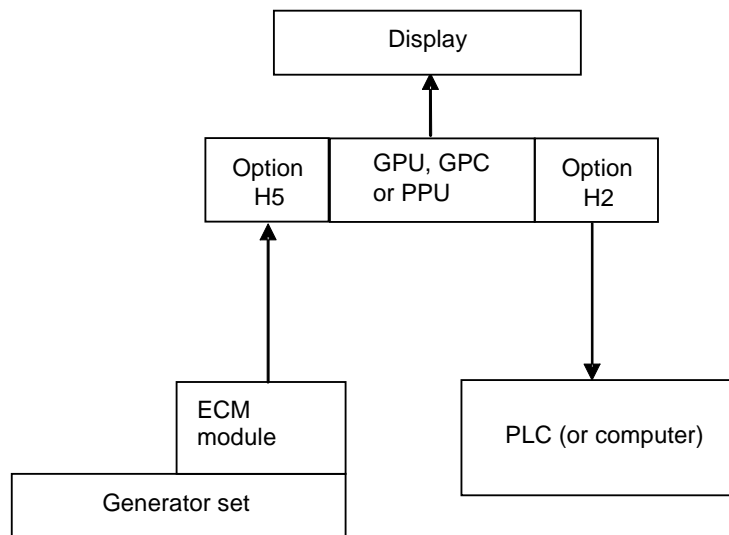
Terminals 29 and 33 are internally connected.
Terminals 31 and 35 are internally connected.



Only Modbus can be used to transmit the data to the PLC. Profibus and CAN open cannot be used.

Wirings

Principle diagram



For wiring diagrams, please refer to the installation instructions.

3. Functional description

This communication extracts information from the Electronic Control Module (ECM) of an engine equipped with an ECM module with CAN bus interface. The values can be used as display values, alarms/shutdown alarms and values to be transmitted through Modbus.

Engine types

Data can be read from the following engine types:

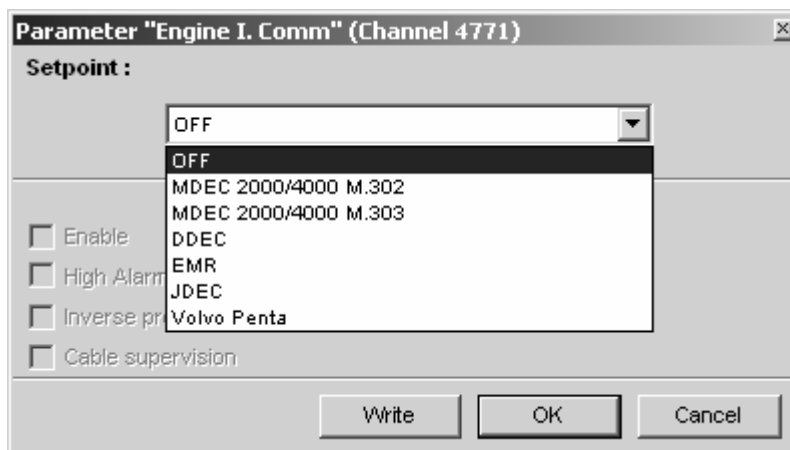
Engine manufacturer	Protocol	Comment
MTU	MDEC communication, module 302 or 303	
MTU	MDEC communication, module M.201 or M.304	Select M.303
Detroit Diesel	DDEC communication	
Deutz	EMR CAN bus communication	
John Deere	JDEC communication	
Volvo	Volvo Penta D12 AUX communication	

The communication type can be set up via the display or the PC utility software.

Engine type selection

The proper communication is selected via the PC utility software in the dialog box shown below. It can also be selected in the display (menu 4770).

If OFF is selected it means that no communication is selected.



Please choose MDEC 2000/4000 M.303, when M.201 or M.304 is required.

Communication system

All these protocols are based on a CAN bus communication system. Except for the MDEC communication, all of them are based on the J1939. The MDEC protocol is an MTU designed protocol.

The Baud rate is fixed by the engine manufacturer at:

MDEC: Series 2000/4000-module 302	MDEC: Series 2000/4000-module 303	DDEC	EMR	JDEC	Volvo Penta
125 kBit/s	125 kBit/s	250 kBit/s	250 kBit/s	250 kBit/s	250 kBit/s

EIC unit

The selection of the EIC unit determines whether bar/Celsius or psi/Fahrenheit is used in the display. The selection is made in menu 4780. The selection affects display value and also the data readable by the Modbus communication (option H2).

Alarm functions

A number of alarms can be configured. Please refer to the Designer's Reference Handbook for information about this configuration.

The following items can be configured to an alarm:

Menu number	Alarm	Comment
4790	Communication error	
4810	EIC shutdown	Binary value See shutdown table below
4820	Overspeed	Actual RPM
4830/4840	Coolant temperature (2 levels)	Actual temperature
4850/4860	Oil pressure (2 levels)	Actual pressure



If the alarm must activate a relay output, please notice that the number of configurable relay outputs is option dependent.

Warning

Below is a list of warnings that can be shown on the display. The warnings will be shown as an alarm in the alarm window. The alarms can be acknowledged from the display, but they will be visible until the alarm disappears in the ECM module.

The available warnings depend on the actual communication type:

	Warning list	MDEC: Module 302	MDEC: Module 303	DDEC	EMR	JDEC	Volvo Penta
1	MDEC yellow alarm	X	X	-	-	-	-
2	Low oil pressure warning	X	X	-	-	-	-
3	EIC temp. lube oil	X	X	-	-	-	-
4	High coolant temp. warning	X	X	-	-	-	-
5	High intercooler temp.	X	X	-	-	-	-
6	Defect coolant level switch	X	X	-	-	-	-
7	EMR warning	-	-	-	X	-	-
8	JDEC warning	-	-	-	-	X	-
9	Oil pressure	-	-	-	-	X	-
10	Intake manifold	-	-	-	-	X	-
11	Coolant temperature	-	-	-	-	X	-
12	Fuel injection pump	-	-	-	-	X	-

Shutdown

All shutdown alarms are grouped in the table below. It is possible to configure 'EIC shutdown' (menu 4810) in the system setup to put the unit in a shutdown state and/or to activate relay outputs if necessary. The shutdown state is present until it disappears in the ECM module.

Below the list of the alarms included in this group depending on engine communication type:

	Alarm type	MDEC: Module 302	MDEC: Module 303	DDEC	EMR	JDEC	Volvo Penta
1	Overspeed shutdown	X	X	-	X	-	-
2	MDEC red alarm	X	X	-	-	-	-
3	Low oil pressure shutdown	X	X	-	X	X	-
4	EIC temp. lube oil	X	X	-	-	-	-
5	Low coolant level shutdown	X	X	-	-	-	-
6	MDEC ECU failure	X	X	-	-	-	-
7	High coolant temp. shutdown	X	X	-	-	-	-
8	High oil temp. shutdown	X	X	-	-	-	-
9	High charge air temp. shutdown	X	X	-	-	-	-
10	High coolant temp. shutdown	-	-	-	X	X	-
11	EMR shutdown	-	-	-	X	-	-
12	JDEC shutdown	-	-	-	-	X	-
13	Fuel temperature	-	-	-	-	X	-
14	Fuel control valve	-	-	-	-	X	-
15	ECU failure	-	-	-	-	X	-

Displayed values

The table shows which values that can be displayed in the view menu. That is in V1, V2 and V3.

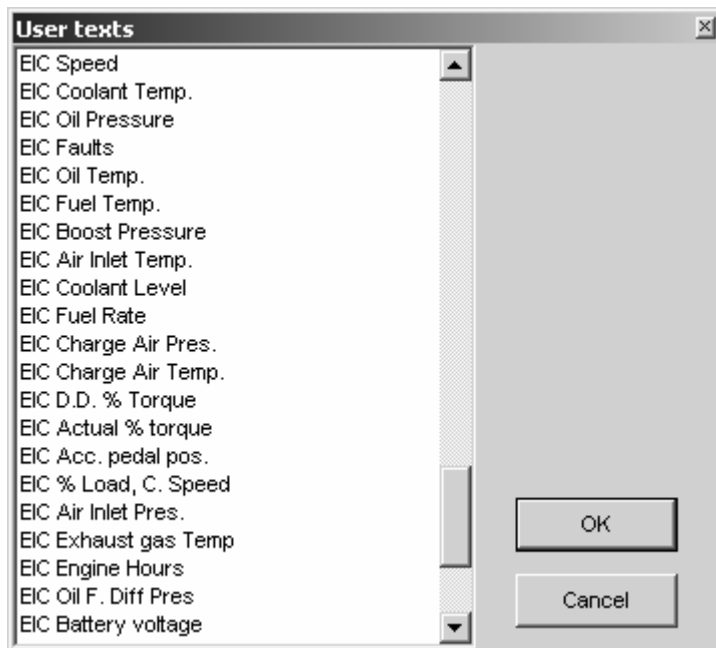


For information about the menu structure of the ML2, please see the Designer's Reference Handbook.



In the GPU without option G2 only V1 is available.

The display values corresponding to the engine communication have a description beginning with 'EIC'.



Error messages

The following error messages can occur:

Message	Description
Engine I. value N.A.	The value is not available for the present engine type
Value selected error	The value cannot be read due to sensor error, sub-system or module error
'N.A.'	The available value changes to N.A. due to communication error

Object selection

The view lines can be configured with the available values:

Object	MDEC M.302	MDEC M.303	DDEC	EMR	JDEC	Volvo Penta
EIC speed	Avail.	Avail.	Avail.	Avail.	Avail.	Avail.
EIC coolant temp.	Avail.	Avail.	Avail.	Avail.	Avail.	Avail.
EIC oil pressure	Avail.	Avail.	Avail.	Avail.	Avail.	Avail.
EIC faults	Avail.	Avail.	N. A.	Avail.	N. A.	N. A.
EIC oil temp.	Avail.	Avail.	Avail.	N. A.	N. A.	Avail.
EIC fuel temp.	Avail.	Avail.	Avail.	N. A.	Avail.	N. A.
EIC boost pressure	N. A.	N. A.	Avail.	N. A.	N. A.	Avail.
EIC air inlet temp.	N. A.	N. A.	Avail.	N. A.	N. A.	Avail.
EIC coolant level	N. A.	N. A.	Avail.	N. A.	N. A.	N. A.
EIC fuel rate	N. A.	N. A.	Avail.	N. A.	Avail.	Avail.
EIC charge air pressure	Avail.	Avail.	N. A.	N. A.	N. A.	N. A.
EIC charge air temp.	Avail.	Avail.	N. A.	N. A.	Avail.	Avail.
EIC d.d. % torque	N. A.	N. A.	N. A.	N. A.	N. A.	Avail.
EIC actual % torque	N. A.	N. A.	N. A.	N. A.	N. A.	Avail.
EIC acc. pedal pos.	N. A.	N. A.	N. A.	N. A.	N. A.	Avail.
EIC % load, c. speed	N. A.	N. A.	N. A.	N. A.	N. A.	Avail.
EIC air inlet pressure	N. A.	N. A.	N. A.	N. A.	N. A.	Avail.
EIC exhaust gas temp.	N. A.	N. A.	N. A.	N. A.	N. A.	Avail.
EIC engine hours	N. A.	N. A.	N. A.	N. A.	N. A.	Avail.
EIC oil f. diff. press.	N. A.	N. A.	N. A.	N. A.	N. A.	Avail.
EIC battery voltage	N. A.	N. A.	N. A.	N. A.	N. A.	Avail.
EIC fuel del. press.	N. A.	N. A.	N. A.	N. A.	N. A.	Avail.
EIC oil level	N. A.	N. A.	N. A.	N. A.	N. A.	Avail.
EIC crankcase press.	N. A.	N. A.	N. A.	N. A.	N. A.	Avail.
EIC coolant pressure	N. A.	N. A.	N. A.	N. A.	N. A.	Avail.
EIC water in. fuel	N. A.	N. A.	N. A.	N. A.	N. A.	Avail.

Modbus communication

If option H2 (Modbus) is installed, then the data can be transmitted to a PLC or a computer.



Please refer to the option H2 technical documentation for more information about our standard external Modbus communication from the multi-line 2 controller to an external PLC (or computer).

4. Parameter list



For information about the structure of the parameter descriptions, see the Designer's Reference Handbook.

4770 Engine communications

No.	Setting	1 st setting	2 nd setting	3 rd setting	4 th setting	5 th setting	6 th setting	7 th setting
4771	Engine comm.	OFF	MDEC M.302	MDEC M.303	DDEC	EMR	JDEC	Volvo Penta

4780 CAN unit

No.	Setting	First setting	Second setting	Factory setting	
4781	CAN unit	Set point	Bar/Celsius	Psi/Fahrenheit	Bar/Celsius

4790 EI communication error

No.	Setting	Min. setting	Max. setting	Factory setting	
4791	EI comm. error	Delay	0.0 s	100.0 s	0.0 s
4792	EI comm. error	Relay output A	R0 (none)	Option dependent	R0 (none)
4793	EI comm. error	Relay output B	R0 (none)		R0 (none)
4794	EI comm. error	Enable	OFF	ON	OFF

4810 EIC shutdown

No.	Setting	Min. setting	Max. setting	Factory setting	
4812	EIC shutdown	Delay	0.0 s	100.0 s	0.0 s
4813	EIC shutdown	Relay output A	R0 (none)	Option dependent	R0 (none)
4814	EIC shutdown	Relay output B	R0 (none)		R0 (none)
4815	EIC shutdown	Enable	OFF	ON	OFF

4820 EIC overspeed

No.	Setting	Min. setting	Max. setting	Factory setting	
4821	EIC overspeed	Set point	0 RPM	2000 RPM	1600 RPM
4822	EIC overspeed	Delay	0.0 s	100.0 s	2.0 s
4823	EIC overspeed	Relay output A	R0 (none)	Option dependent	R0 (none)
4824	EIC overspeed	Relay output B	R0 (none)		R0 (none)
4825	EIC overspeed	Enable	OFF	ON	ON

4830 EIC cooling water temperature 1

No.	Setting		Min. setting	Max. setting	Factory setting
4831	EIC cool w. t. 1	Set point	-40 deg.	210 deg.	100 deg.
4832	EIC cool w. t. 1	Delay	0.0 s	100.0 s	5.0 s
4833	EIC cool w. t. 1	Relay output A	R0 (none)	Option dependent	R0 (none)
4834	EIC cool w. t. 1	Relay output B	R0 (none)		R0 (none)
4835	EIC cool w. t. 1	Enable	OFF	ON	OFF

4840 EIC cooling water temperature 2

No.	Setting		Min. setting	Max. setting	Factory setting
4841	EIC cool w. t. 2	Set point	-40 deg.	210 deg.	110 deg.
4842	EIC cool w. t. 2	Delay	0.0 s	100.0 s	5.0 s
4843	EIC cool w. t. 2	Relay output A	R0 (none)	R16 (relay 16)	R0 (none)
4844	EIC cool w. t. 2	Relay output B	R0 (none)	R16 (relay 16)	R0 (none)
4845	EIC cool w. t. 2	Enable	OFF	ON	OFF

4850 EIC oil pressure 1

No.	Setting		Min. setting	Max. setting	Factory setting
4851	EIC oil press. 1	Set point	0.0 bar	10.0 bar	2.0 bar
4852	EIC oil press. 1	Delay	0.0 s	100.0 s	5.0 s
4853	EIC oil press. 1	Relay output A	R0 (none)	R16 (relay 16)	R0 (none)
4854	EIC oil press. 1	Relay output B	R0 (none)	R16 (relay 16)	R0 (none)
4855	EIC oil press. 1	Enable	OFF	ON	OFF

4860 EIC oil pressure 2

No.	Setting		Min. setting	Max. setting	Factory setting
4861	EIC oil press. 2	Set point	0.0 bar	10.0 bar	1.0 bar
4862	EIC oil press. 2	Delay	0.0 s	100.0 s	5.0 s
4863	EIC oil press. 2	Relay output A	R0 (none)	R16 (relay 16)	R0 (none)
4864	EIC oil press. 2	Relay output B	R0 (none)	R16 (relay 16)	R0 (none)
4865	EIC oil press. 2	Enable	OFF	ON	OFF

5. Modbus communication

This chapter has to be considered as additional information for the option H2 documentation. Please refer to the ECM (Engine Communication Module) user manuals for more information about the ECM protocol technical description and the details of each communication value.

A number of engine data can be transmitted from the engine communication module to the multi-line 2 unit. They can be transmitted through the option H2 (Modbus).

The available values depend on the type of engine communication that is selected.

The data readable by the Modbus communication are converted into the chosen unit in menu 4780.

MDEC series – 2000/4000 – module 302 & 303 – MTU engines

Measurement table (words (2 bytes), read only registers - function code = 03h).

Addr.	Content	Type
78	EIC alarms	Bit 0 EIC communication error Bit 2 EIC shutdown Bit 3 EIC overspeed Bit 4 EIC coolant water temperature 1 Bit 5 EIC coolant water temperature 2 Bit 6 EIC oil pressure 1 Bit 7 EIC oil pressure 2
79	EIC alarms	Bit 0 Overspeed, shutdown Bit 1 Low oil pressure, warning Bit 2 Low oil pressure, shutdown Bit 3 Low coolant level, shutdown Bit 4 MDEC ECU failure, shutdown Bit 5 High coolant temperature, warning Bit 6 High coolant temperature, shutdown Bit 7 High intercooler coolant temperature, warning Bit 8 High oil temperature, shutdown Bit 9 High charge air temperature, shutdown Bit 10 Defect coolant level switch, warning Bit 11 MDEC yellow alarm, warning Bit 12 MDEC red alarm, shutdown
80	EIC speed	Engine comm. speed [rpm]
81	EIC coolant temp.	Engine comm. coolant temperature [deg][F]
82	EIC oil pressure	Engine comm. engine oil pressure [bar/100][psi/100]
83	EIC faults	Engine comm. number of actual faults
84	EIC oil temp.	Engine comm. engine oil temperature [deg][F]
85	EIC fuel temp.	Engine comm. fuel temperature [deg/10][F/10]
90	EIC charge air pressure	Engine comm. charge air pressure [bar/100][psi/100]
91	EIC charge air temp.	Engine comm. charge air temperature [deg][F]

DDEC – Detroit engines

Measurement table (words (2 bytes), read only registers - function code = 03h).

Addr.	Content	Type
78	EIC alarms	Bit 0 EIC communication error Bit 2 EIC shutdown Bit 3 EIC overspeed Bit 4 EIC coolant water temperature 1 Bit 5 EIC coolant water temperature 2 Bit 6 EIC oil pressure 1 Bit 7 EIC oil pressure 2
80	EIC speed	Engine comm. speed [rpm]
81	EIC coolant temp.	Engine comm. coolant temperature [deg][F]
82	EIC oil pressure	Engine comm. engine oil pressure [bar/100][psi/100]
84	EIC oil temp.	Engine comm. engine oil temperature [deg][F]
85	EIC fuel temp.	Engine comm. fuel temperature [deg][F]
86	EIC boost pressure	Engine comm. boost pressure [bar/100][psi/100]
87	EIC air inlet temp.	Engine comm. air inlet temperature [deg][F]
88	EIC coolant level	Engine comm. coolant level [%/10]
89	EIC fuel rate	Engine comm. fuel rate [L/h/10]

EMR – Deutz engines

Measurement table (words (2 bytes), read only registers - function code = 03h).

Addr.	Content	Type
78	EIC alarms	Bit 0 EIC communication error Bit 2 EIC shutdown Bit 3 EIC overspeed Bit 4 EIC coolant water temperature 1 Bit 5 EIC coolant water temperature 2 Bit 6 EIC oil pressure 1 Bit 7 EIC oil pressure 2
79	EIC alarms	Bit 0 High coolant temperature shutdown Bit 1 Low oil pressure shutdown Bit 2 Overspeed shutdown Bit 3 EMR shutdown (LS: lamp status) Bit 4 EMR warning (LS: lamp status)
80	EIC speed	Engine comm. speed [rpm]
81	EIC coolant temp.	Engine comm. coolant temperature [deg][F]
82	EIC oil pressure	Engine comm. engine oil pressure [bar/100][psi/100]
83	EIC faults	Engine comm. number of actual faults

JDEC – John Deere engines

Measurement table (words (2 bytes), read only registers - function code = 03h).

Addr.	Content	Type
78	EIC alarms	Bit 0 EIC communication error Bit 2 EIC shutdown Bit 3 EIC overspeed Bit 4 EIC coolant water temperature 1 Bit 5 EIC coolant water temperature 2 Bit 6 EIC oil pressure 1 Bit 7 EIC oil pressure 2
79	EIC alarms	Bit 0 High coolant temperature shutdown Bit 1 Low oil pressure shutdown Bit 2 Fuel temperature shutdown Bit 3 Fuel control valve shutdown Bit 4 EUC failure shutdown Bit 5 Oil pressure warning Bit 6 Intake manifold warning Bit 7 Coolant temperature warning Bit 8 Fuel injection pump warning Bit 9 JDEC shutdown (LS: lamp status) Bit 10 JDEC warning (LS: lamp status)
80	EIC speed	Engine comm. speed [rpm]
81	EIC coolant temp.	Engine comm. coolant temperature [deg][F]
82	EIC oil pressure	Engine comm. engine oil pressure [bar/100][psi/100]
85	EIC fuel temp.	Engine comm. fuel temperature [deg][F]
89	EIC fuel rate	Engine comm. fuel rate [L/h/10]
91	EIC charge air temp.	Engine comm. charge air temperature [deg][F]

Volvo Penta engines

Measurement table (words (2 bytes), read only registers - function code = 03h).

Addr.	Content	Type
78	EIC alarms	Bit 0 EIC communication error Bit 2 EIC shutdown Bit 3 EIC overspeed Bit 4 EIC coolant water temperature 1 Bit 5 EIC coolant water temperature 2 Bit 6 EIC oil pressure 1 Bit 7 EIC oil pressure 2
80	EIC speed	Engine comm. speed [rpm]
81	EIC coolant temp.	Engine comm. coolant temperature [deg][F]
82	EIC oil pressure	Engine comm. engine oil pressure [bar/100][psi/100]
84	EIC oil temp.	Engine comm. engine oil temperature [deg][F]
86	EIC boost pressure	Engine comm. boost pressure [bar/100][psi/100]
87	EIC air inlet temp.	Engine comm. air inlet temperature [deg][F]
89	EIC fuel rate	Engine comm. fuel rate [L/h/10]
91	EIC charge air temp.	Engine comm. charge air temperature [deg][F]
92	EIC d.d. % torque	Engine comm. driver's demand engine - percent torque [%]
93	EIC actual % torque	Engine comm. actual engine - percent torque [%]
94	EIC acc. pedal pos.	Engine comm. accelerator pedal position [%]
95	EIC % load, c. speed	Engine comm. percent load at current speed [%]
96	EIC air inlet pressure	Engine comm. air inlet pressure [bar/100][psi/100]
97	EIC exhaust gas temp.	Engine comm. exhaust gas temperature [deg/10][F/10]
98	EIC engine hours	Engine comm. ENGINE HOURS [H]
99	EIC oil f. diff. press.	Engine comm. engine oil filter diff. press. [bar/100][psi/100]
100	EIC battery voltage	Engine comm. battery potential [V/10], switched
101	EIC fuel del. press.	Engine comm. fuel delivery pressure [bar/100][psi/100]
102	EIC oil level	Engine comm. engine oil level [%]
103	EIC crankcase press.	Engine comm. crankcase pressure [bar/100][psi/100]
104	EIC coolant pressure	Engine comm. coolant pressure [bar/100][psi/100]
105	EIC water in. fuel	Engine comm. WATER IN FUEL INDICATOR [ON/OFF]

**Resolution hours (98) - appr. 3.75 years supported.**

DEIF A/S reserves the right to change any of the above