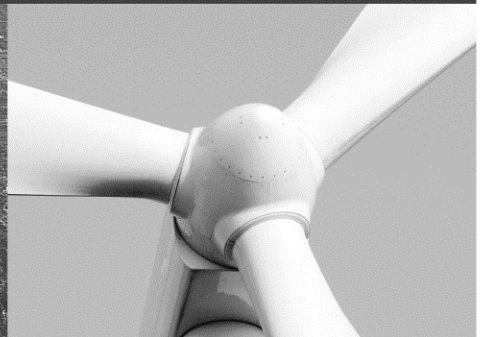
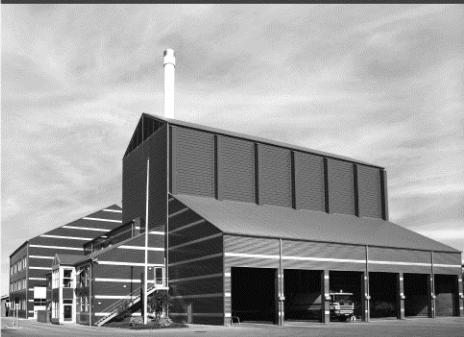




-power in control



DATA SHEET



Remote Maintenance Box, RMB

- Application
- Setup
- Function description
- Available options
- Order specification
- Technical specifications
- Unit dimensions



DEIF A/S · Frisenborgvej 33 · DK-7800 Skive
Tel.: +45 9614 9614 · Fax: +45 9614 9615
info@deif.com · www.deif.com

Document no.: 4921240389A
SW version AGC 3.40.0 or later
and AGC 4.00.0 or later

Application

DEIF has made the remote maintenance box, RMB, to comply with the demands of a remote control box where it is possible in a safe way to perform maintenance at a transformer substation or other electrical installation.



The RMB is also designed to operate in specific scenarios where it is either considered necessary or a requirement to have the interface/operator panel close to the connection points.

Setup

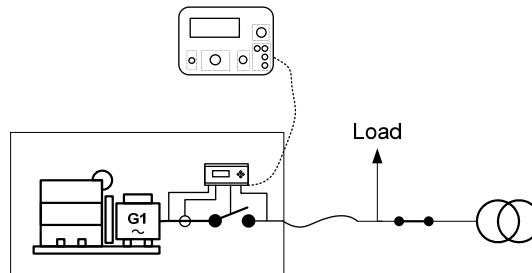
Setup is easily done via a menu structure in the display (password protected) or via the USB PC connection and the Multi-line 2 Windows[®] based PC utility software. The PC utility software can be downloaded free of charge from www.deif.com. The utility software offers additional features such as monitoring of all relevant information during commissioning, saving and downloading of settings and downloading of software updates.

Function description

Generator synchronising:

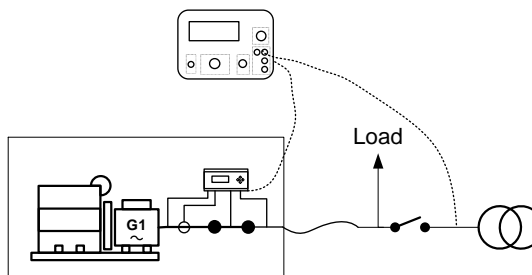
The operator connects the box and by turning the “function select” switch, the generator will start up. When the genset is in sync., the generator breaker will close and the generator starts to take the load. Now it is possible to deload the mains. When the mains power is zero, the breaker can be switched off or the fuses can be removed.

Now the mains is disconnected, and it is possible to make a repair or service.



Sync to mains:

The operator turns the function selector to synchronisation to mains, and when the static sync is ok, the mains breaker can be closed or the fuses can be connected. The generator starts to deload, and finally the generator breaker is opened and the generator can be stopped.



Available options

Option	Description	Option type	Note
J10	2 x 5 m cable for Remote Maintenance Box	Cable	One data cable and one power cable
J11	2 x 25 m cable for Remote Maintenance Box	Cable	One data cable and one power cable
J12	2 x 50 m cable for Remote Maintenance Box	Cable	One data cable and one power cable



Display CAN cable for DU-2 connection and 2 x plugs for cables for the Remote Maintenance Box, option J8, is to be ordered together with the AGC-4.

Order specifications

Example 1:

Type	Option	Option
RMB	J11	
Type	Option	Option

Example 2:

Type	Option	Option
RMB	J12	
Type	Option	Option
	AGC-4-J8	

Technical specifications

Operating temperature: -25...70°C (-13...158°F)

Storage temperature: -40...70°C (-40...158°F)

Climate: +55°C 97% RH
To IEC 60068-2-30 Db

Measuring voltage: 100-400V AC +/-20%

Shock: 50 g, 11 ms half sine
To IEC 60068-2-27 Ea

Bump: 40 g, 6 ms half sine
4000 bumps in each direction
2 directions
3 Axes,
Total bumps: 24000
To IEC 60068-2-27 Ea

Safety: To EN 61010-1, installation category (overvoltage category) III, 600 V, pollution degree 2

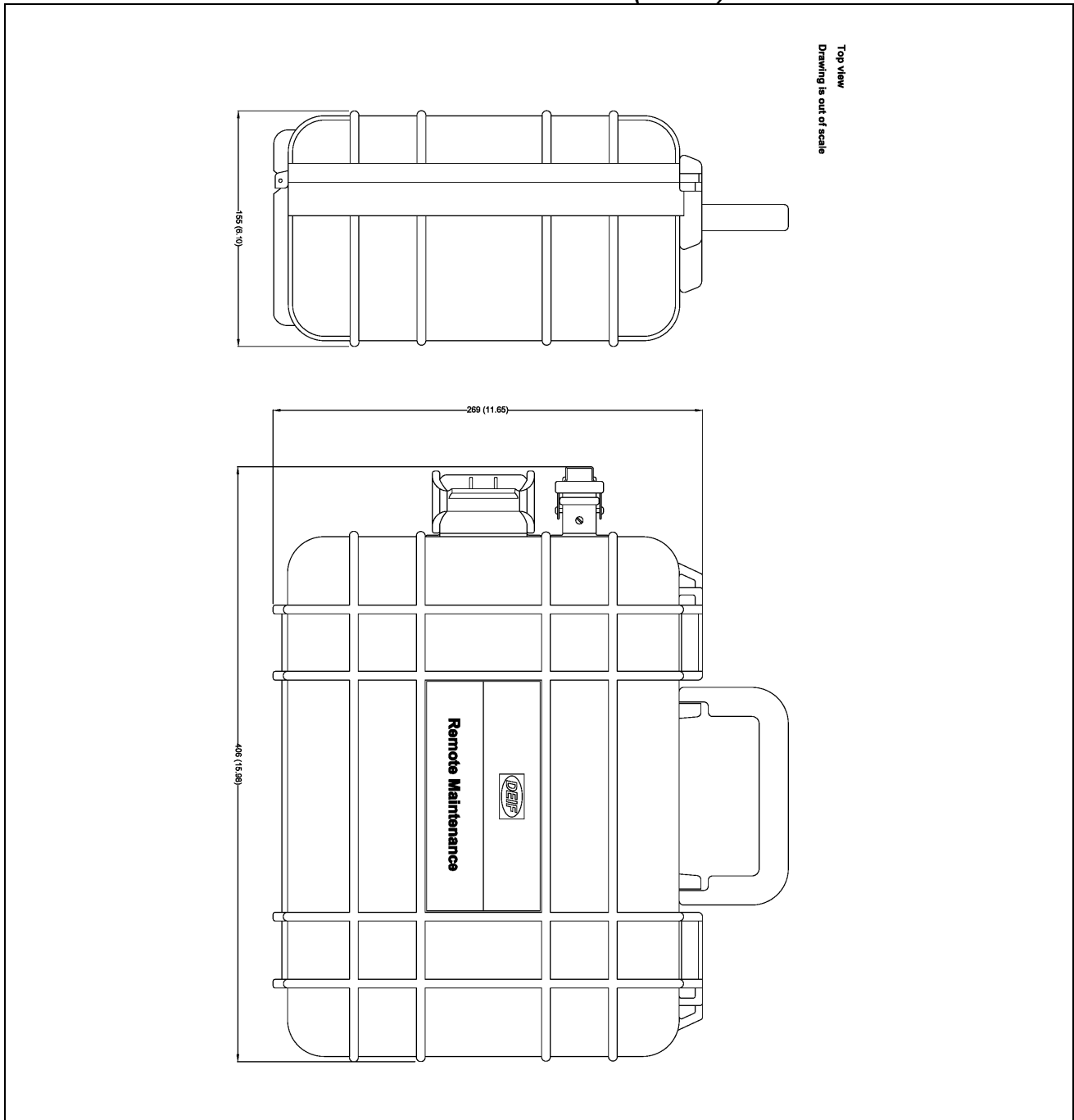
Material: All plastic materials are self-extinguishing according to UL94 (V1)

Plug connections: AC plug: OLFLEXR ROBUST 210
Communication plug: UNITRONICR BUS IBS Yv

Protection: Unit: IP20 open, IP67 closed
Display: IP52 (IP54 with gasket: option L)
To IEC/EN 60529

Weight: Base unit: 4.7 kg (10.40 lbs)
Option J10, 5 m cable: 2.0 kg (4.41 lbs)
Option J11, 25 m cable: 6.1 kg (13.45 lbs)
Option J12, 50 m cable: 11.4 kg (25.13 lbs)

Unit dimensions in mm (inches)



Disclaimer

DEIF A/S reserves the right to change any of the contents of this document without prior notice.

Due to our continuous development we reserve the right to supply equipment which may vary from the described.



DEIF A/S, Frisenborgvej 33
DK-7800 Skive, Denmark

Tel.: +45 9614 9614, Fax: +45 9614 9615
E-mail: deif@deif.com, URL: www.deif.com

