

Stator Earth Fault Relay, RMC-142D

Protect Your Operators Against Electric Shocks Due to Earth Faults



DEIF's RMC-142D stator earth fault relay protects genset operators against electric shock in case of earth faults in the generator's stator.

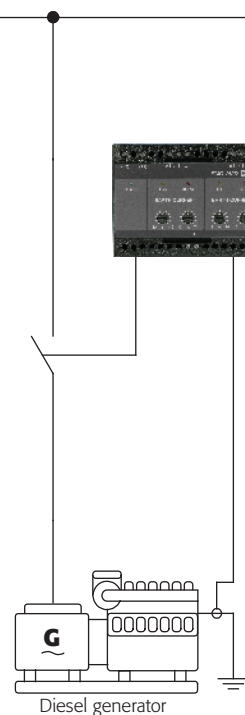
The relay also protects against loss of excitation in case of earth fault in the stator.

The RMC-142D is part of DEIF's complete range of relays for protection and control of generators featuring a number of adjustable parameters.

RMC-142D Features

- ✓ Earth fault protection at two levels
- ✓ Built-in filter for 3rd harmonic
- ✓ LED indication of fault condition
- ✓ Timer-controlled tripping
- ✓ LED indication for activated relay
- ✓ 35 mm DIN rail or base-mounting

RMC-142D Application Example



RMC-142D Type Approvals

