

Overload/Reverse Power Relays, RMP-1xxD

Protect Your Prime Mover Against Overload and Reverse Power



DEIF's RMPs are protective overload and reverse power relays and parts of DEIF's complete range of relays for generator protection and control.

The RMPs are applied for protection of the prime mover against overload and for protection against reverse power.

Protection against overload is crucial in setups where the prime mover is under-dimensioned in proportion to the AC generator.

The versatile units feature a number of adjustable parameters.

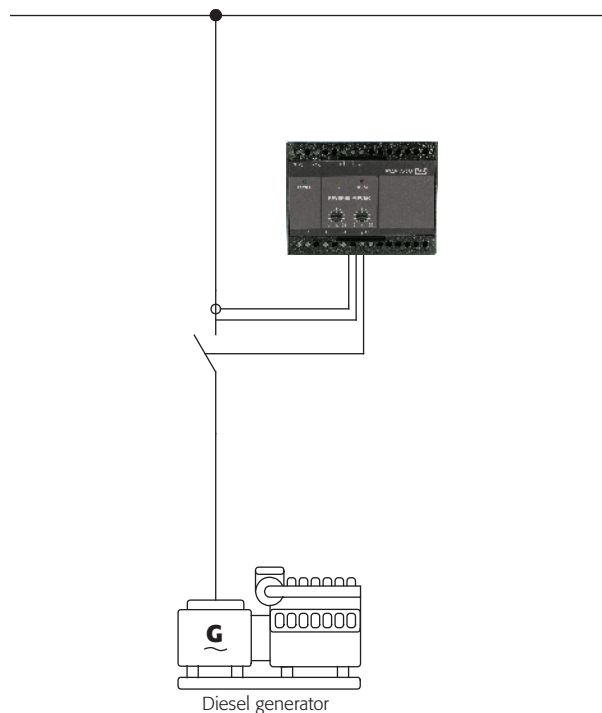
RMP Options

- RMP-111D
- RMP-112D
- RMP-121D

RMP-1xxD Features

- ✓ Protection of prime mover
- ✓ 3-phase measurement
- ✓ LED indication of alarm condition
- ✓ Timer-controlled tripping
- ✓ LED indication for activated relay
- ✓ 35 mm DIN rail or base-mounting

RMP-1xxD Application Example



RMP-1xxD Type Approvals



ClassNK



-power in control-

