



-power in control

TECHNICAL DOCUMENTATION



Split core current transformers, type KBU

Data sheet

Frequency	50/60 Hz (16 2/3 to 400 Hz on request)
Nominal Voltage	≤ 720 V AC ≤ 1200 V AC for ASK 165.5, 205.5
Isolation Class	E
Test Voltage	3000 V, 1 min, 50 Hz (Nominal Voltage ≤ 720 V) 6000 V, 1 min, 50 Hz (Nominal Voltage ≤ 1200 V)
Thermal Continuous Thermal Current	$I_{cth} = 1.0 \times I_n$ $I_{cth} = 1.2 \times I_n$ for ASK 165.5, 205.5
Rated Short-Time Thermal Current	$I_{th} = 60 \times I_n$, 1 sec (max. 100 kA) for ASK, ASR, KBU
Rated Dynamic Current	$I_{dyn} = 2.5 \times I_{th}$
Instrument Security Factor	FS 5 to 15 (see product label for specific value)
Operating Temperature	-5°C to 50°C
Storage Temperature	-25°C to 70°C
Standard References	IEC / DIN EN 61869/1+2 DIN 42600/1+2



Current transformers overview

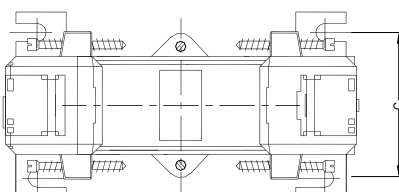
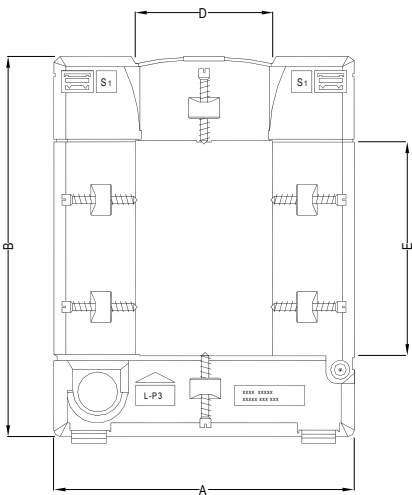
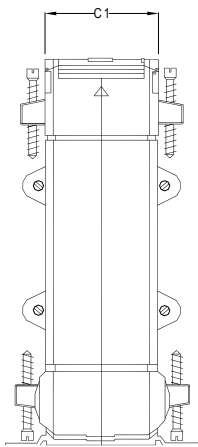
Click on a product name or check mark to jump to information page.

Page	3	4	5	6													Page
Primary nominal current	KBU 23	KBU 58	KBU 812	KBU 816													Primary nominal current
A																	A
1																	1
2.5																	2.5
5																	5
10																	10
15																	15
20																	20
25																	25
30																	30
40																	40
50																	50
60																	60
75																	75
80																	80
100																	100
125																	125
150																	150
200																	200
250	✓	✓	✓														250
300	✓	✓	✓														300
400	✓	✓	✓														400
500		✓	✓														500
600		✓	✓														600
750		✓	✓														750
800		✓	✓														800
1000		✓	✓	✓													1000
1200			✓	✓													1200
1250			✓														1250
1500			✓	✓													1500
1600				✓													1600
1800																	1800
2000				✓													2000
2500				✓													2500
3000				✓													3000
3200																	3200
4000				✓													4000
5000				✓													5000
6000																	6000
7500																	7500
Primary conductor in mm	20×30	50×80	80×120	80×160													Primary conductor in mm
Round conductor in mm	20	50	80	80													Round conductor in mm
Transform. width in mm	93	125	155	195													Transform. width in mm

* For the current transformers above, click-on mountings are available for fitment onto 35mm DIN-rails (DIN 50022).



Secondary current		5A		1A	
Primary current A	Burden VA	Accuracy class		Accuracy class	
		1	0.5	1	0.5
		Art.-no.	Art.-no.	Art.-no.	Art.-no.
250	1		✓		
300	3.75	✓		✓	
400	5	✓		✓	

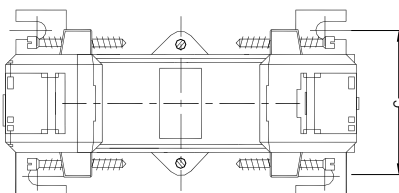
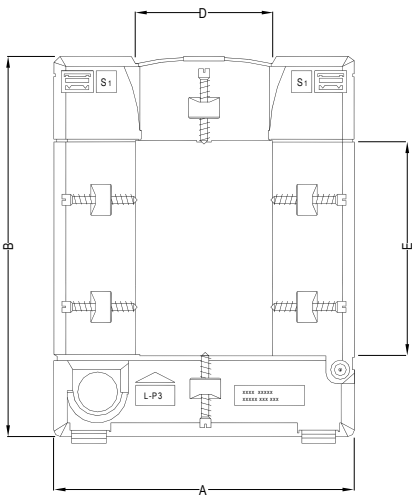
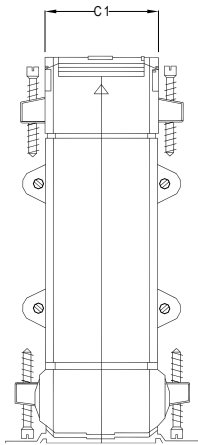


Type	KBU 23	KBU 58
A	93	125
B	106	158
C/C1	34/58	34/58
D	20	50
E	30	80

Primary conductor	20 × 30mm
Round conductor	Ø 20mm
Weight	0.550-1.320kg (1.21-2.91lbs)
Security factor	FS 5
DIN rail mounting	Not available
Sealed shutter	Not available

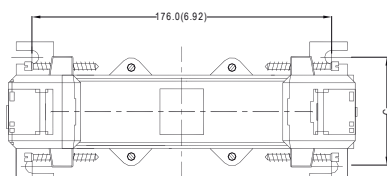
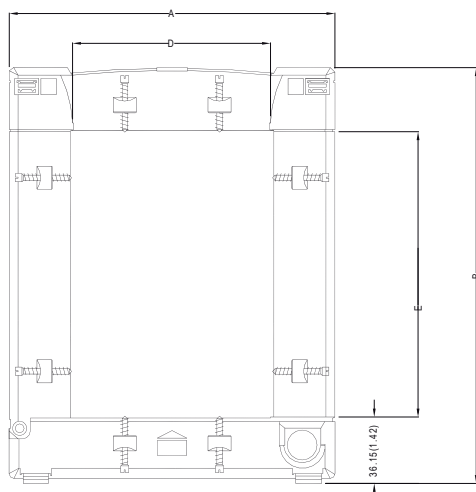
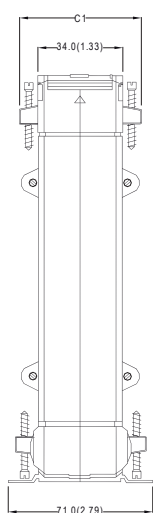


Secondary current		5A		1A	
Primary current A	Burden VA	Accuracy class		Accuracy class	
		1	0.5	1	0.5
		Art.-no.	Art.-no.	Art.-no.	Art.-no.
250	1.5	✓		✓	
300	2.5	✓		✓	
400	2.5	✓		✓	
500	2.5		✓		✓
	5	✓		✓	
600	2.5		✓		✓
	5	✓		✓	
750	2.5		✓		✓
	5	✓		✓	
800	2.5		✓		✓
	7.5	✓		✓	
1000	5		✓		✓
	10	✓		✓	



Type	KBU 23	KBU 58
A	93	125
B	106	158
C/C1	34/58	34/58
D	20	50
E	30	80

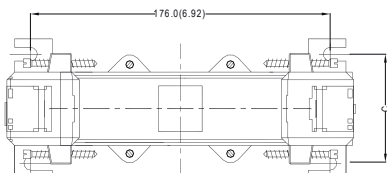
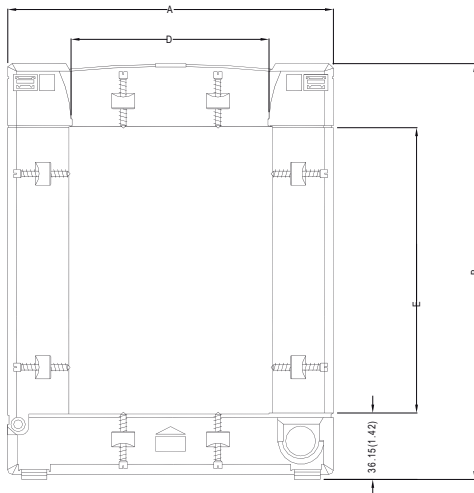
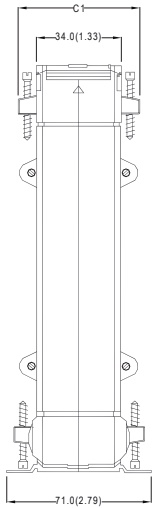
Primary conductor	50 × 80mm
Round conductor	Ø 20mm
Weight	0.920-1.320kg (2.03-2.91lbs)
Security factor	FS 5
DIN rail mounting	Not available
Sealed shutter	Not available



Secondary current		5A		1A	
Primary current A	Burden VA	Accuracy class		Accuracy class	
		1	0.5	1	0.5
		Art.-no.	Art.-no.	Art.-no.	Art.-no.
250	1.5	✓		✓	
300	2.5	✓		✓	
400	2.5	✓		✓	
500	2.5		✓		✓
	5	✓		✓	
600	2.5		✓		✓
	5	✓		✓	
750	2.5		✓		✓
	5	✓		✓	
800	2.5		✓		✓
	7.5	✓		✓	
1000	5		✓		✓
	10	✓		✓	
1200	5		✓		✓
	10	✓		✓	
1250	7.5		✓		✓
	15	✓		✓	
1500	7.5		✓		✓
	15	✓		✓	

Type	KBU 812	KBU 816
A	155	195
B	198	243
C/C1	34/58	64/79
D	80	80
E	120	160

Primary conductor	80 × 120mm
Round conductor	Ø 80mm
Weight	1.580-1.550kg (2.87-3.09lbs)
Security factor	FS 5
DIN rail mounting	Not available
Sealed shutter	Not available



Secondary current		5A		1A	
Primary current A	Burden VA	Accuracy class		Accuracy class	
		1	0.5	1	0.5
		Art.-no.	Art.-no.	Art.-no.	Art.-no.
1000	10	✓	✓	✓	✓
	15	✓		✓	
1200	10	✓	✓	✓	✓
	15	✓		✓	
1500	10	✓	✓	✓	✓
	15	✓	✓	✓	✓
1600	10	✓	✓	✓	✓
	15	✓	✓	✓	✓
2000	10	✓	✓	✓	✓
	15	✓	✓	✓	✓
2500	10	✓	✓	✓	✓
	15	✓	✓	✓	✓
3000	15	✓	✓	✓	✓
	30	✓		✓	
4000	15	✓	✓	✓	✓
	30	✓	✓	✓	✓
5000	15	✓	✓	✓	✓
	30	✓	✓	✓	✓

Type	KBU 812	KBU 816
A	155	195
B	198	243
C/C1	34/58	64/79
D	80	80
E	120	160

Primary conductor	80 × 160mm
Round conductor	Ø 80mm
Weight	1.320-3.980kg (2.91-8.77lbs)
Security factor	1,000A-1,500A = FS 5 1,600A-5,000A = FS 10
DIN rail mounting	Not available
Sealed shutter	Not available

Test certificate

On request, we can provide you with a test certificate for a specific current transformer along with the CT. Please inform us when placing your order.

Sealed shutter

On request, we can supply a transparent plastic cover. The cover seals the connections on the CT in a way that leaves the type label visible. Please check availability on each individual data sheet.



Excitation curve

On request, we can provide you with an excitation curve for a specific current transformer along with the CT. Please inform us when placing your order.

Optional frequency

Frequency range for a standard CT is 50-60Hz. On request, we can provide you with a frequency range from 16 2/3 – 400Hz. Please inform us when placing your order.

Cast resin

Cast resin is standard for all CT's with a nominal current >4,000A. On request, all CT's with a nominal current <4,000A can be produced with cast resin. Please inform us when placing your order. The min. and max. weight specification for each type refers to standard versions. The specification is different if cast resin is ordered for CT's <4,000A.

Mounting

Foot angle for screw mounting and busbar mounting screws with isolating protection caps are supplied along with the CT. DIN-rail mounting for tubes, plug-ins and protection transformers is available on request for certain CT types. Please check availability on each individual data sheet.

