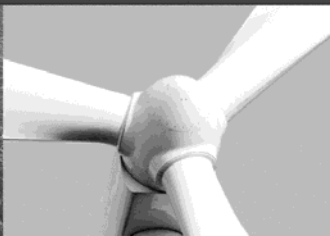




-power in control



MOUNTING INSTRUCTIONS



DIN-rail bracket for MIB and MIC-2



DEIF A/S · Frisenborgvej 33 · DK-7800 Skive
Tel.: +45 9614 9614 · Fax: +45 9614 9615
info@deif.com · www.deif.com

Document no.: 4189320052A

1. Warnings and legal information

Legal information and responsibility

DEIF takes no responsibility for installation of the DIN-rail bracket. If there is any doubt about how to install it, the company responsible for the installation of the unit must be contacted.

Electrostatic discharge awareness

Sufficient care must be taken to protect the terminals against static discharges during the installation. Once the unit is installed and connected, these precautions are no longer necessary.

Safety issues

Installing the DIN-rail bracket implies work with dangerous currents and voltages. Therefore, the installation should only be carried out by authorised personnel who understand the risks involved in working with live electrical equipment.



**Be aware of the hazardous live currents and voltages.
Do not touch any AC measurement inputs as this could
lead to injury or death.**

2. Package contents

- DIN-rail bracket
- Two mounting screws
- Plug for supply inputs
- Mounting instructions

3. Installation

MIB

- Make sure all power and measuring inputs are removed or disconnected.

- Install the bracket on the back of the MIB.

Remove the corner of the label, like this.



Mount the bracket by sliding it from the side, and fasten the two screws.



- Replace the power supply plug which was enclosed in the package.



MIC-2 (no module)

- Make sure all power and measuring inputs are removed or disconnected.
- Install the bracket on the back of the MIC-2.

Mount the bracket by sliding it from the side, and fasten the two screws.

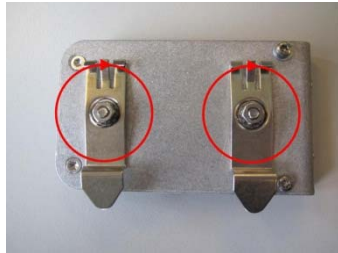


- Replace the power supply plug which was enclosed in the package.



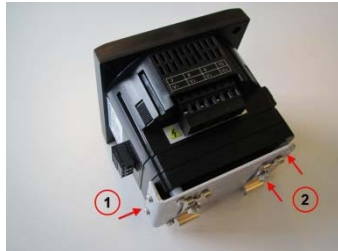
MIC-2 (with one module)

- Make sure all power and measuring inputs are removed or disconnected.
- Rotate the two DIN clips on the back of the DIN bracket 180 degrees.



- Install the bracket on the back of the extension module of the MIC-2.

Mount the bracket by sliding it from the side, and fasten the two screws.



Only one extension module can be mounted on the MIC-2 when the DIN-rail bracket is used, otherwise it can lead to product malfunction.

DEIF A/S reserves the right to change any of the above.