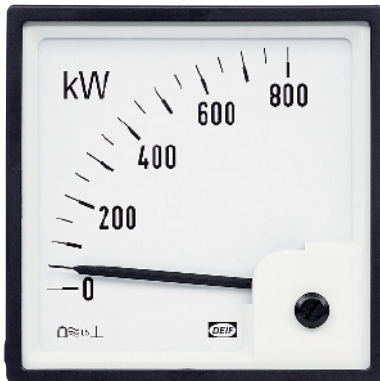


# Watt or Var Meter, WQ

Measure power or reactive power



The WQ measures power or reactive power using a moving coil movement and a built-in electronic watt or Var transducer.

Measuring power in a single-phase or three-phase network, the transducer PCB converts the signal into a DC current which is then fed to the moving coil instrument.

The DEIF WQ comes with a high degree of transient protection and is available in Q96 mm and Q144 mm sizes.

## WQ features

- ▶ 1.5 accuracy class
- ▶ 90° and 240° pointer deflection
- ▶ IP52 protection (IP54 on request)
- ▶ Measuring voltage: 100...110...127...220...230...240...380...400...415...440 V AC
- ▶ Measuring range: Frequency: 45...65 Hz
- ▶ Measuring current: direct or from C.T./1 A or /5 A
- ▶ Scale: customised and exchangeable scale available for 90°

## WQ type approval



[www.deif.com](http://www.deif.com)