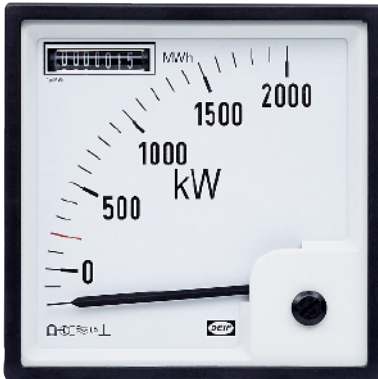


# Combined kWh counter and power meter

Register & retain consumed or generated electrical energy



kWh counters are for registration of consumed or generated electrical energy. They are microprocessor-controlled and equipped with a 7-digit electromechanical counter which retains the reading in case of supply voltage failure.

## General features

- ▶ Accuracy class 1.0 (EN 62053-21)
- ▶ For single-phase and 3-phase net-works
- ▶ Microprocessor-controlled meters with pulse output (SO)
- ▶ Simultaneous measurement of two quantities (except type WQR96 MKII)
- ▶ Scale: customised and exchangeable scale
- ▶ 60 to 400 V AC aux. power supply

## Variants

## Features

WQR96 MKII	1 seven-digit register (kWh or kvarh). One pulse output.
WQ2R96 MKII	2 seven-digit registers (kWh and kvarh). Two pulse outputs.
WQR96-x MKII	1 seven-digit register (kWh or kvarh) & 90 ° indication. One pulse output.
WQR96-c MKII	1 seven-digit register (kWh or kvarh) & 240 ° indication. One pulse output.

## Variant overview



WQR96 MKII



WQ2R96 MKII



WQR96-x MKII



WQR96-C MKII



[www.deif.com](http://www.deif.com)