



-power in control



## DATA SHEET



### **Shunt resistors** Ranges 10 to 1500 A 60 mV

- Dimensions to DIN 43703
- Class 0.5
- Extensive programme
- Standard versions on stock



DEIF A/S · Frisenborgvej 33 · DK-7800 Skive  
Tel.: +45 9614 9614 · Fax: +45 9614 9615  
info@deif.com · www.deif.com

Document no.: 4921210042I  
SW version:

**Accuracy:**

Class 0.5 -10 to 55°C IEC/EN 60051-1.

**Installation:**

Tightening torque must follow the copper-copper connection in the application.

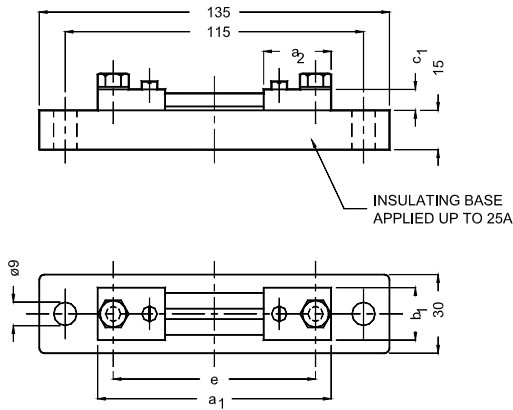
**Temperature coefficient:**

0.05 %/10°C. The shunt is calibrated at 75 % of In.

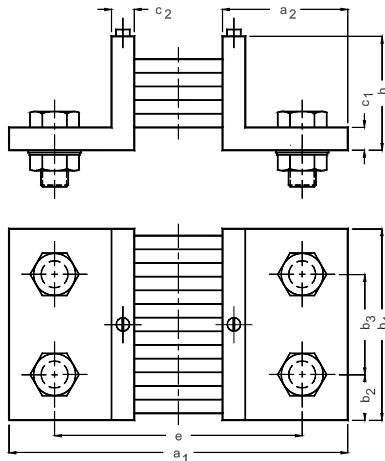
**Overloads:**

10 to 250 A 10 x In for 5 sec.

400 to 1500 A 5 x In for 5 sec.



Picture 1 – Form A.



Picture 2 – Form B.

Primary	Secondary	Insulation base	
10 A	60 mV	With base	Form A
15 A	60 mV		
20 A	60 mV		
25 A	60 mV		
30 A	60 mV	With base	
		Without base	
40 A	60 mV	With base	
		Without base	
50 A	60 mV	With base	
		Without base	
60 A	60 mV	With base	
		Without base	
75 A	60 mV	With base	
		Without base	
80 A	60 mV	With base	
		Without base	
100 A	60 mV	With base	
		Without base	
150 A	60 mV	With base	
		Without base	
200 A	60 mV	Without base	Form B
250 A	60 mV		
400 A	60 mV		
500 A	60 mV		
600 A	60 mV		
800 A	60 mV		
1000 A	60 mV		
1500 A	60 mV		

Table 1 - Variants.

Form	Form A		Form B					
	10-25 A	30-150 A	200-250 A	400-800 A	1000 A	1500 A		
a1	90	100	145		165			
a2	28	33	55		65			
b1	20		30	40	60	90		
b2			15	20	30	21		
b3						48		
c1	8		10					
c2			10					
e	78	80	105		115			
h			30					
Weight kg (max.)	0.12 to 0.13		0.13	0.61	0.83 0.85	0.9	1.45	1.96

Table 2 - Dimensions.

**Order specifications**

Example:	Shunt resistor Shunt resistor	Amps, W/O base 60 A, with base
----------	----------------------------------	-----------------------------------

Due to our continuous development we reserve the right to supply equipment which may vary from the described.



DEIF A/S, Frisenborgvej 33  
DK-7800 Skive, Denmark

Tel.: +45 9614 9614, Fax: +45 9614 9615  
E-mail: deif@deif.com, URL: www.deif.com

